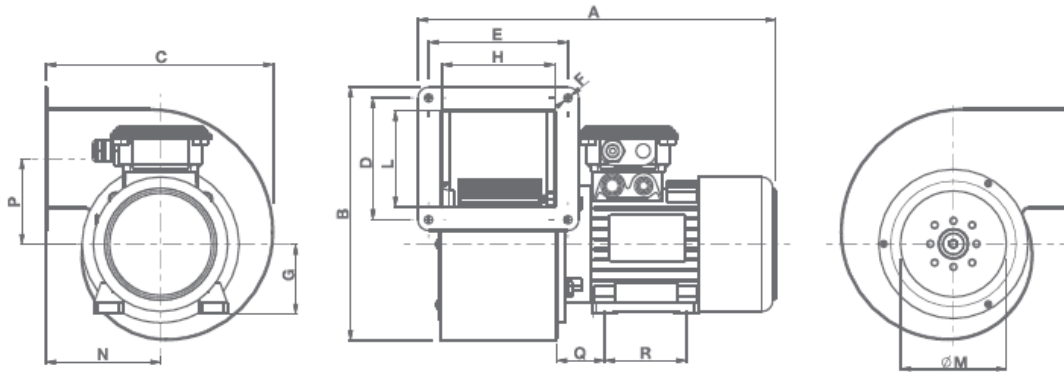
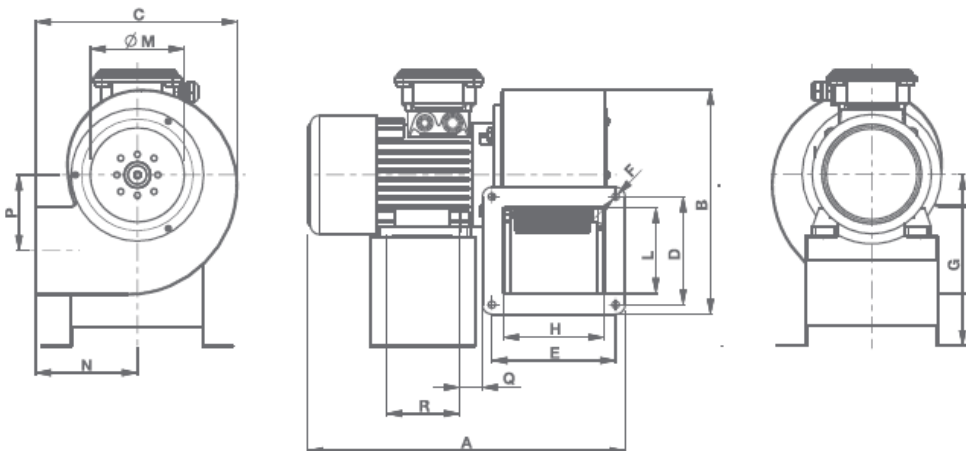


Abmessungen / Dimensions / Dimensioni

C - Serie

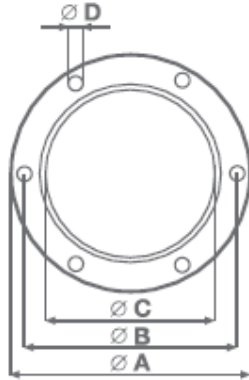


Models	A	B	C	D	E	F	G	H	L	Ø M	N	P	Q	R	Kg
C 10/2 M	260	186	171	72	82	6.5	56	68	63	80	81	66.5	36	71	2.7
C 10/2 T								83	88						4.6
C 15/2 M	281	234	206	108	100	7	71	83	88	108	99	79	45	90	5
C 15/2 T								115	98						6.3
C 20/2 M E	350	258	232	123	123	8.5	71	102	98	108	117	87	45	90	6
C 20/2 T E				124	142			6.3							
C 25/2 M E	366	308	272	126	137	8.5	71	117	108	132	131	111	45	90	6.8
C 25/2 T E								149							187
C 30/2 M E	352	400	340	164	174	8.5	71	149	137	170	152	144	45	90	8.4
C 30/2 T E								185							187
C 30/4 M E	351	471	416.5	220	182	8.5	80	112	187	199	181.5	146	50	100	9
C 30/4 T E								147							185
C 31/4 T E	351	471	416.5	220	182	8.5	80	112	187	199	181.5	146	50	100	9.5
C 35/4 M E	387	472	418	214	208	8.5	90	149	187	199	181.5	146	50	100	11
C 35/4 T E								185							187
C 37/4 M E	435	472	418	214	208	8.5	90	149	187	199	181.5	146	50	100	20.5
C 37/4 T E								185							187
C 40/4 T E	466	472	418	214	208	8.5	90	185	187	199	181.5	147	50	100	14.6
C 40/4 M E	549	557.2	484.5	228	228	9	90	200	200	240	222	217	56	125	21
C 45/4 T E	549	557.2	484.5	228	228	9	90	200	200	240	222	217	56	125	61



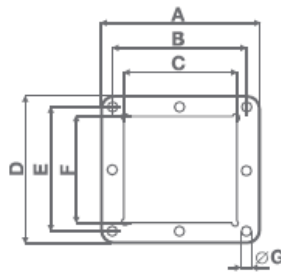
Models	A	B	C	D	E	F	G	H	L	Ø M	N	P	Q	R	Kg
C 46/4 T E	593	675	566	306	265	11.5	442	236	277	288	250	244.5	27	270	61

Air intake



Models	Ø A	Ø B	Ø C	Ø D	n° holes
C 10	111.5	100	80	7	6
C 15	141	128	108		
C 20	152	132			
C 25	190	170	132		
C 30	240	220	170	8.5	8
C 31					
C 35	282	262	199		
C 37	320	300	236		
C 40	420	395	288		
C 45					
C 46					

Delivery outlet



Models	A	B	C	D	E	F	Ø G	n° holes
C 10	98	82	68	88	72	63	6.5	4
C 15	125	100	83	132	108	88	7	
C 20	145	123	102	145	123	98	8.5	
C 25	164	142	115	146	124			
C 30	162	137	117	150	126	108		
C 31	165	139	112	190	164	137		8
C 35	200	174	149		220	187		
C 37	218	182		250	214			
C 40	244	208	185		260	228	200	
C 45	260	228	200	260	228	200	9	8
C 46	295	264	236	336	306	277	11.5	

Masse / Dimensions / Dimensioni, mm